



## COMPLIANCE MODULE – GDPR

**EPICK™ for GDPR:** effective support for all public and private organizations involved in the process of adapting to the new Data Protection Regulation in place starting May 25th 2018.



### Context

The GDPR extends the obligation of compliance to all organizations, European and non-European, that process personal data of individuals residing in the EU. Non-compliance can imply losses considering the sanctions, the risks for the business and the image.

EPICK™, provides appropriate functions and methodologies to carry out the set of activities that are necessary to prepare to GDPR compliance.



### Features of GDPR Compliance



**ASSESSMENT COMPLIANCE**

To identify the GDPR compliance level of the client organisation and monitor the compliance process over time.



**REGISTER OF TREATMENTS**

Track and monitor processing and key information in accordance with the new Data Protection Regulation.



**SOFTWARE EVALUATION**

To automatically analyze the level of adequacy of software applications in view of data protection by design.



**REMEDIATION PLAN**

To define and implement remediation measures that optimize the overall cost/benefit ratio.



**REPORTING**

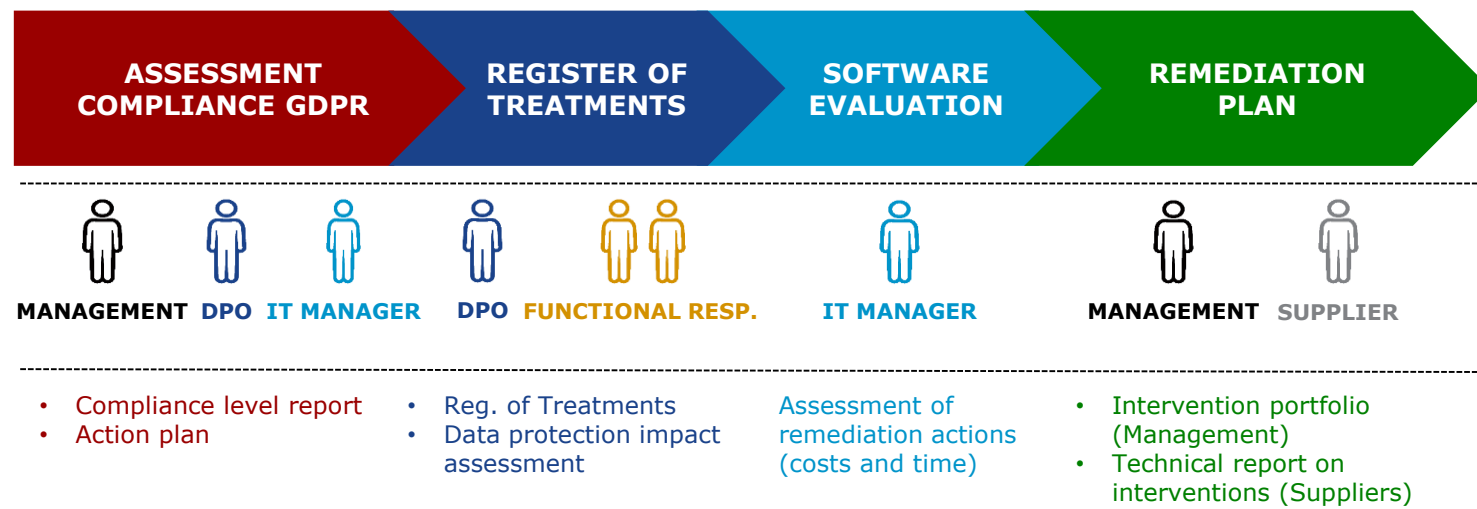
For the automatic generation of reports for the various stakeholders in the adaptation process.



**EPICK™ for GDPR:** a set of dedicated functions, robust methodologies, specialist advice and technical support services. An integrated and complete solution at your service.



### Functional process, stakeholders and deliverables



### Advantages of the features

- ✓ Realistic, comprehensive business risk assessment. The risks are estimated in economic and financial terms considering: the penalties envisioned by the GDPR and the effects on business continuity and reputational damage.
- ✓ Optimization:
  - ✓ the cost/benefit ratio of remediation plans
  - ✓ investments in adaptation to compliance
- ✓ Speeding up the process of compliance with the GDPR

### Distinctive features

- PROFILING FOR ROLE, FUNCTIONS AND VISIBLE DATA
- SW EVALUATION ALSO IN MULTI TIERED AND MULTI TECHNOLOGY CONTEXTS
- THE REMEDIATION SAMPLES PROVIDED HIGHLIGHT THE VIOLATION AND ACTIONS TO FIX IT
- CUSTOMIZATION OF THE CHECK LIST MANAGER FOR THE ASSESSMENT PHASE

### Integrations

- ACTIVE DIRECTORY
- CAS SSO THROUGH CAS
- LDAP AUTHENTICATION WITH LDAP

### Security

- TLS TLS PROTOCOL
- PASSWORD ENCRYPTION WITH SHA1 AND OTHER MAINSTREAM ALGORITHMS

### Installing

- ON PREMISE
- ON CLOUD